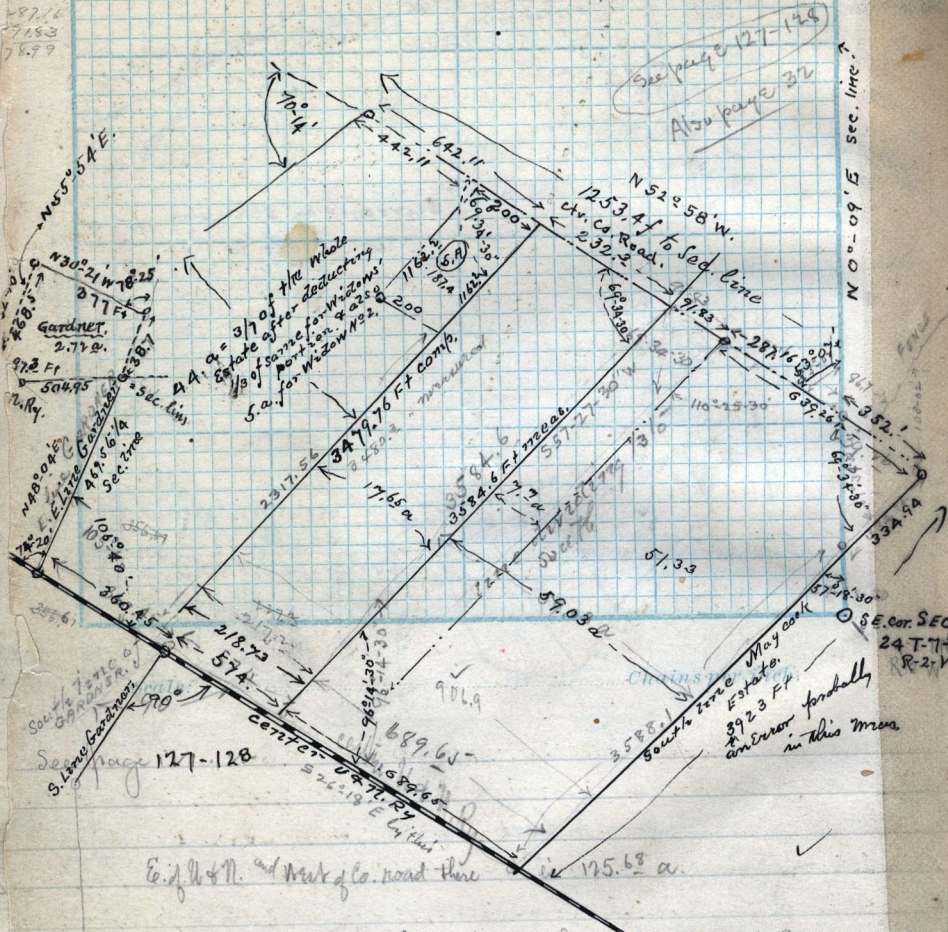


Gardner's tract: Pt. S. W. 1/4 Sec. 24, T. 7, N-R. 2, W. Estate  
 Beg. 10.60 chs W. of S. E. Cor. Sd. 1/4  
 Sec. N 30° 30' W 6.18 chs. - S 55° 33' W.  
 7.07 chs. S 26° 16' E. 1.47 chs. to S. line  
 of said 1/4 Sec. E along S. line of said  
 1/4 Sec. 8.32 chs. to Beg. 2.75 chs. more or less.

Surveyed  
 March 1896.

87.16  
 91.53  
 78.99



5 acres in a piece 200. ft wide to be cut out of the cor. of the tract below the road, adjoining the second 37 from South.  
 3/7 of the whole remainder to be cut off in a piece on North side for 3 girls and a 1 acre piece (each, widow & 2 sons & 1 girl)  
 1 acre to be cut off near 200 ft wide  
 3/4 of total remainder = 40.7 a  
 total Estate E. of W & N. center = 154. a

